



53206 Thrust ball bearings, single direction

- Popular item

Thrust ball bearings, single direction

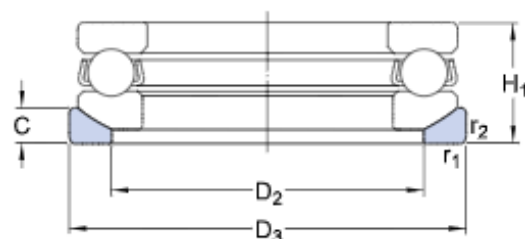
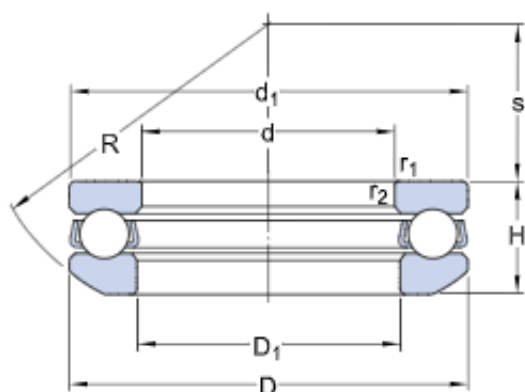
Bearing data

[Tolerances,](#)
table 1

Bearing interfaces

[Seat tolerances for standard](#)
[conditions,](#)
[Tolerances and resultant fit](#)

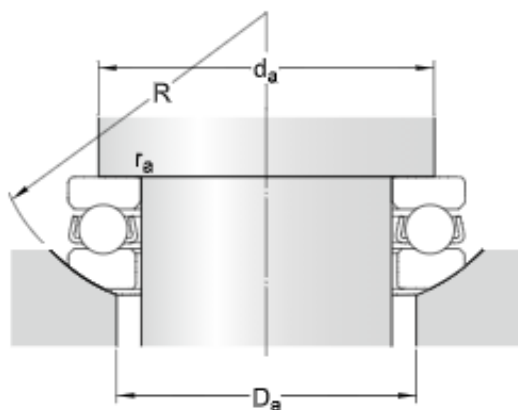
Technical specification



DIMENSIONS

d	30 mm	Bore diameter
D	52 mm	Outside diameter
H	17.8 mm	Height
H ₁	20 mm	Height bearing including seat washer
d ₁	≈ 52 mm	Outside diameter shaft washer
D ₁	≈ 32 mm	Inner diameter housing washer
D ₂	42 mm	Inner diameter sphered seat washer
D ₃	55 mm	Outside diameter sphered housing washer
C	5.5 mm	Height sphered housing washer
R	45 mm	Radius sphered housing washer
s	22 mm	Centre height housing washer sphere
r _{1,2}	min. 0.6 mm	Chamfer dimension washer

ABUTMENT DIMENSIONS



d_a min. 43 mm Abutment diameter shaft

D_a max. 42 mm Abutment diameter housing

r_a max. 0.6 mm Fillet radius



CALCULATION DATA

C	25.1 kN	Basic dynamic load rating
C_0	51 kN	Basic static load rating
P_u	1.86 kN	Fatigue load limit
	4 500 r/min	Reference speed
	6 300 r/min	Limiting speed
A	0.013	Minimum load factor

MASS

0.18 kg	Mass bearing (including seat washer where applicable)
---------	---

ASSOCIATED PRODUCTS